

Clover



Corner

OWSLEY COUNTY 4-H NEWSLETTER - OCTOBER 2024

 Cooperative Extension Service



Carissa Miske

CARISSA MISKE - OWSLEY COUNTY
Extension Agent for 4-H Youth Development

Dates & Events

October 3rd-4th
Pumpkin Days
Field Day



October 2nd
Youth Science Day

October 8th
Heritage Day

October 10th
Junior Homemakers



October 15th
OCES 4th Grade Club

October 16th
Family Science Night @ OCHS
4-H Dog Club

October 21st
Pumpkins Due for Judging

October 23rd
OCES Family Literacy Night
OCMS Healthy Habits



October 25th
OCES 5th Grade Club
October 29th
4-H Make & Take Club
October 31st
Booneville Boofest



In This Issue

- *4-H Make & Take Club
- *Junior Homemakers
- * 4-H Dog Club
- *Spider Bites Recipe
- *Pumpkin Decorating and Carving Contest
- *4-H Photos

Cooperative Extension Service

Agriculture and Natural Resources
Family and Consumer Sciences
4-H Youth Development
Community and Economic Development

MARTIN-GATTON COLLEGE OF AGRICULTURE, FOOD AND ENVIRONMENT

Educational programs of Kentucky Cooperative Extension serve all people regardless of economic or social status and will not discriminate on the basis of race, color, ethnic origin, national origin, creed, religion, political belief, sex, sexual orientation, gender identity, gender expression, pregnancy, marital status, genetic information, age, veteran status, physical or mental disability or reprisal or retaliation for prior civil rights activity. Reasonable accommodation of disability may be available with prior notice. Program information may be made available in languages other than English. University of Kentucky, Kentucky State University, U.S. Department of Agriculture, and Kentucky Counties, Cooperating. Lexington, KY 40506



Disabilities accommodated with prior notification.



Cooperative Extension Service

4-H MAKE&TAKE CLUB

Members will make a craft to take home each meeting. Registration is required! Open to all ages!

**Tuesday, October 29th:
Halloween Masks**



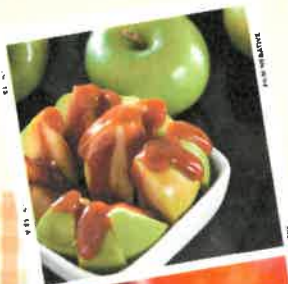
3:30 p.m.-4:30 p.m.
Owsley County Extension Office

An Equal Opportunity Organization



Cooperative Extension Service

OWSLEY COUNTY JUNIOR HOMEMAKERS



LOCATION: OWSLEY COUNTY EXTENSION OFFICE

TIME: 3:30 P.M.-4:30 P.M.

**THURSDAY
OCTOBER 10TH**

**WE WILL BE MAKING A RAG WREATH
AND ENJOYING A
DIY CARAMEL APPLE BAR!**



An Equal Opportunity Organization

OWSLEY COUNTY 4-H

DOG CLUB



Wednesday, October 16th

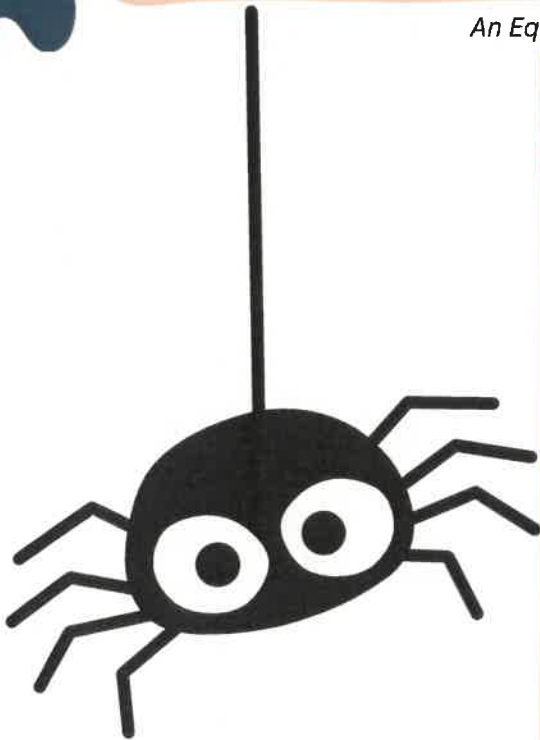
Location: Owsley County Extension Office

Time: 5:00 p.m.-6:00 p.m.

Remember if you plan on bringing your dog we **MUST** have required paperwork. It is not required to bring your dog!



An Equal Opportunity Organization



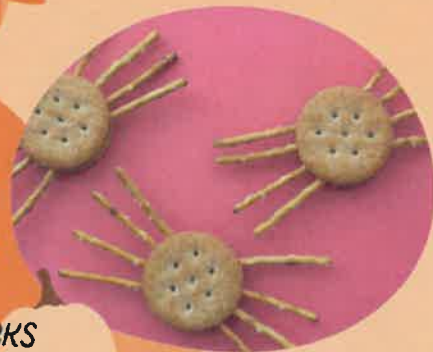
SPIDER BITES

DIRECTIONS:

1. SPREAD EIGHT CRACKERS WITH HUMMUS.
2. ARRANGE FOUR PRETZEL STICKS ON EACH SIDE OF THE CRACKERS ALLOWING THEM TO PROTRUDE, FORMING LEGS.
3. TOP WITH REMAINING CRACKERS

INGREDIENTS:

- 16 ROUND WHOLE WHEAT CRACKERS
- 1/2 CUP HUMMUS
- 48 MINI PRETZEL STICKS



SOURCE: EAT SMART TO PLAY HARD: JEANNIE NAJOR, PROGRAM COORDINATOR, UNIVERSITY OF KENTUCKY COOPERATIVE EXTENSION SERVICE

60 CALORIES; 2.5G TOTAL FAT; 0G SATURATED FAT; 0G TRANS FAT; 0MG CHOLESTEROL; 160MG SODIUM; 9G TOTAL CARBOHYDRATE; 0G DIETARY FIBER; 1G TOTAL SUGARS; 2G PROTEIN; 0% DAILY VALUE OF VITAMIN D; 2% DAILY VALUE OF CALCIUM; 6% DAILY VALUE OF IRON; 2% DAILY VALUE OF POTASSIUM

OWSLEY COUNTY EXTENSION OFFICE



HALLOWEEN

PUMPKIN DECORATING AND CARVING
CONTEST

AGE CATEGORIES:

- 5 & UNDER BEST PAINTED PUMPKIN
- 6 - 10 BEST PAINTED PUMPKIN
- 11 - 17 BEST CARVED PUMPKIN
- 18 & UP BEST CARVED.

Submissions are due to the Owsley
County Extension Office on

OCTOBER 21 BY NOON!

Voting will take place on the Owsley
County Extension Facebook page
between October 22-October 29th. Voting
will end on October 29th at 3:00pm.
Winners will be announced on October
30th and receive their prizes on October
31st at Booneville's Boofest

FOR MORE INFORMATION CONTACT
4H AGENT CARISSA MISKE

-OR-

FCS AGENT ROSA SMITH
AT 593-5109

What our 4-Hers' have been up to!

